

reverso



office for life

 **BURONOMIC**

reverso



reverso

elegance that enhances the image of the Company



Adjustable monitor arm



Frosted glass reception shelf



reverso



One single storage unit but so many options

reverso

so that every employee can organise and add a personal touch to his working environment



reverso



38 mm thick Nitech® desktop



Sliding top access closed



Sliding top access open

reverso

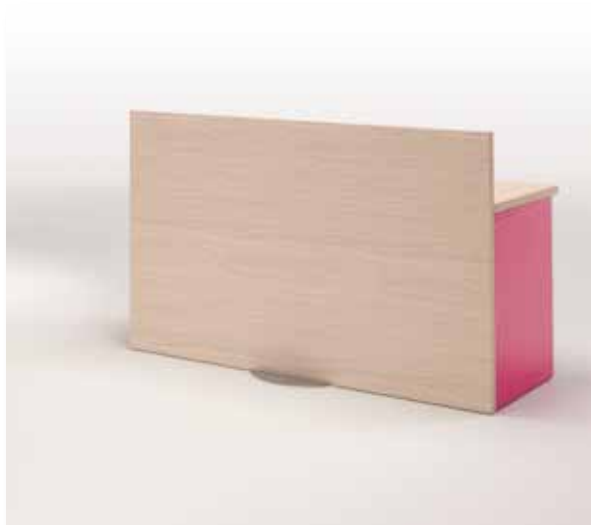
combines an appealing profile with a 38 mm thick, high quality desktop and easily accessible functionalities



reverso



Solo desk



Solo desk with 110 cm high reception panel

reverso
for infinitely modular spaces



Facing desks, one with a 110 cm high partition panel



reverso



Drawer for A4 hanging files

reverso

its design incorporates practical proximity storage

Adjustable height shelf



Sliding pen tray under the desk



Soft close doors





reverso



Plexiglas space divider screen



reverso
optimises layout and maintains personal space



Slim drawer unit





reverso



Open



Closed



Storage compartment



Fully adjustable monitor arm



Space divider

reverso
simple and ingenious technicity for sophisticated accessorisation



reverso



Plexiglas screen



Open storage

reverso

satisfies the need for flexibility, rationality and aesthetics in storage units



Drawer for A4 hanging files



Hinged door unit



reverso



Mobile extension unit



Lamp on huddle table



Connection socket



Fully adjustable monitor arm

reverso
designed to accommodate today's communication technologies



reverso

reverso
a signature for your furnishing originality and identity



Supplied by Merlin Industrial Products Ltd - 0844 963 2197 - sales@merlin-industrial.co.uk





re_eflexion space

r_efix & r_esys't'm



L 140 / L 160 / L 180 cm x D 70 cm
L 180 cm x D 80 cm

r_eface fix & r_eface sys't'm



L 140 / L 160 / L 180 cm x D 70 cm
L 180 cm x D 80 cm

r_eplug



r_econnect



L 140 / L 160 / L 180 cm

r_eblok



r_eboxx



r_emodul



r_eslim



r_eizol



L 60 cm

L 140 / L 160 / L 180 cm

r_efriends



r_esat



r_escreen



vertical partitionning

v.baz



H 100 cm x W 100 / W 140 / W 180 cm
H 140 cm x W 100 / W 140 / W 180 cm

v.baz with v.space



H 100 cm + Plexiglas H 40 cm x W 100 / W 140 / W 180 cm
H 140 cm + Plexiglas H 40 cm x W 100 / W 140 / W 180 cm

v.brik



v.alto



L 80 / L 120 / L 160 cm

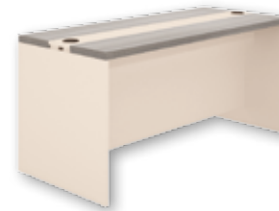
so.cietal hub

s.recept fix & s.recept syst'm

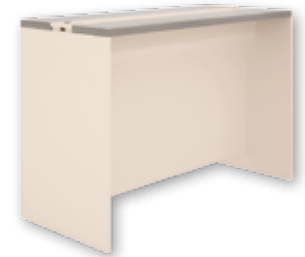


H 110 cm x L 140 / L 160 / L 180 cm

s.contact



s.link



s.comm



s.lux



s.visio



s.poz



s.kub



s.mag



s.pc



s.elec



QUALITY



NITECH® PANEL

Nitech® panels have a minimum thickness of 38 mm and consist of a honeycomb core sandwiched between two 8 mm outer melamine coated panels. The desktop is extruded to take 3 mm reinforcement edging which is in turn encased in a 2 mm thick impact-proof ABS edging finish matching the decor.

This material is :

- INNOVATIVE : a construction that combines considerable thickness with light weight for handling.
- ECOLOGICAL : an entirely recyclable product that uses wood sparingly.
- HIGH PERFORMANCE : rigidity and flatness for a high quality finish.



STRUCTUREX® PANEL

16 to 25 mm thick Structurex® is made of melamine-finished chipboard panels on both outer sides. The 2 mm thick impact-proof ABS edging finish matches the decor.

This material is :

- ECOLOGICAL : sourced from sustainably managed forests and finished using chlorine-free edging.
- DOMESTIC : processed in French factories.
- QUALITATIVE : 680kg/m3 high density and fully traceable batches.



METAL INSERTS & METAL BOLTS

- Screw type assembly
- Secure and durable assembly and disassembly
- Fully locked
- Easily assembled and disassembled



ATTACHING SHELVES AND STORAGE ON NITECH® STRUCTURES

Units can be attached using an easy fixing system that can be tightened with no need for tools (just a coin will do).



PACKAGING

- Packaging tested under extreme conditions : dropping, palletisation.

CERTIFICATION

PEFC



The PEFC label - the Programme for the Endorsement of Forest Certification - guarantees that the timber used to manufacture your furniture is sourced from sustainably managed forests.



All our NITECH® and STRUCTUREX® panels are laboratory tested and PEFC certified. Surfaces are given an anti-glare finish for your VISUAL COMFORT and the plain decorative or wood effect finishes are consistent with BUSINESS FURNITURE requirements.

Supplied by Merlin Industrial Products Ltd - 0844 963 2197 - sales@merlin-industrial.co.uk

FINISHES

All our mentioned finishes, metal and all other materials are to be considered as decoration and imitation finishes.

NITECH® SIMULATED DECORATIVE FINISHES



Cedar **D**



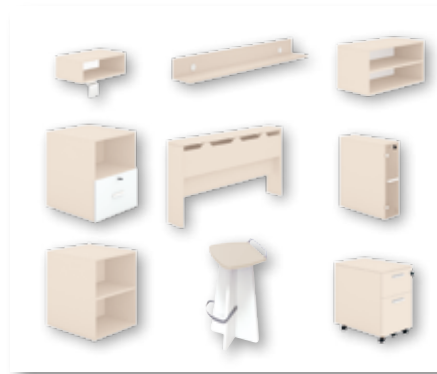
Bleached Oak **N**



Havana **J**



White **S**



STRUCTUREX® FINISHES



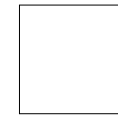
Raspberry **W**



Avocado green **R**



Clay **X**



White **S**



Dafodill **Y**

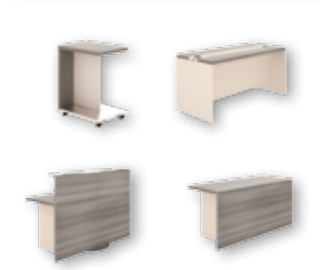


Bluebell **T**



Limestone **P**

NITECH® SIMULATED DECORATIVE FINISHES



Cedar **D**



Bleached Oak **N**



Havana **J**



White **S**

STRUCTUREX® FINISHES



Raspberry **W**



Avocado green **R**



Clay **X**



White **S**



Dafodill **Y**



Bluebell **T**



Limestone **P**

STRUCTUREX® FRONT PANELS ONLY AVAILABLE IN WHITE



White

NITECH® SIMULATED DECORATIVE FINISHES



Cedar **D**



Bleached Oak **N**



Havana **J**



White **S**

STRUCTUREX® FINISHES



Raspberry **W**



Avocado green **R**



Clay **X**



White **S**



Dafodill **Y**



Bluebell **T**



Limestone **P**

VINYL FINISHES



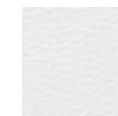
Raspberry **W**



Avocado green **R**



Clay **X**



White **S**



Dafodill **Y**



Bluebell **T**



Limestone **P**



Black **G**